

UNDERWOOD SURGERY

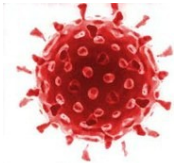
NEWSLETTER 07 / 13

NEW VACCINES

This Summer and Autumn the NHS is introducing a number of new vaccines. The surgery will be offering these over the next few months.

Children-Rotarix®

The aim of the rotavirus immunisation programme in the UK is to prevent a significant number of young infants from developing this infection. This is a condition that commonly causes diarrhoea and vomiting especially in young children.



It is estimated that vaccinating infants in England and Wales may prevent around 90,000 infections, about 10,000 hospitalisations and around two deaths due to rotavirus over the first five years of life. It may also provide some additional protection to the wider population through improved herd immunity.

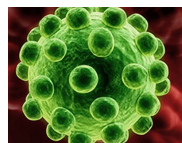
Practices will offer and (where accepted) provide vaccination to all babies at the age of two months and again at three months when they attend for their first and second routine childhood immunisations.

Unlike other childhood vaccines the Rotarix® vaccine is given orally.

<http://www.patient.co.uk/medicine/rotavirus-vaccine-rotarix>

Adults—Zostavax®

Shingles is an infection of a nerve and the area of skin supplied by the nerve. It is caused by a virus called the varicella-zoster virus (this is the same virus that causes chickenpox). Shingles is sometimes called herpes zoster. The symptoms of shingles are a skin rash, blisters and pain. These occur in the area of skin that the infected nerve supplies. The pain may continue even after the skin blisters and rash have healed.



Shingles can occur at any age, but it is most common in people over the age of 50 years. A vaccine against the varicella-zoster virus has been shown to be effective in reducing the risk of older people developing shingles. In the UK from September 2013, a shingles vaccine immunisation programme will be introduced for people aged 70+ to protect against herpes zoster.

Initially, there will also be a catch-up programme which will offer the vaccine to people up to 79 years of age

You will be given one dose of the vaccine by your doctor or nurse. It will be injected just underneath your skin, usually in your upper arm.

<http://www.patient.co.uk/medicine/shingles-vaccine-zostavax>

NHS CHANGES

Despite what you might have heard in the media, the basic principles of the NHS have not changed.

NHS Principles – still standing after 65 years

- NHS launched by the then Minister of Health, Aneurin Bevan, on July 5, 1948
- Based on three core principles:
 - that it meet the needs of everyone
 - that it be free at the point of delivery
 - that it be based on clinical need, not ability to pay

The NHS Constitution

- Created to protect the NHS and make sure it will always do the things it was set up to do in 1948 – provide high-quality healthcare that is free and for everyone
- No government can change the Constitution without the full involvement of staff, patients and the public
- Sets out the rights of all NHS patients

The surgery supports the Constitution. The full document is available on our website.

<http://www.underwoodsurgery.co.uk/downloads/NHS%20Constitution.pdf>

Patient Participation Group (PPG)

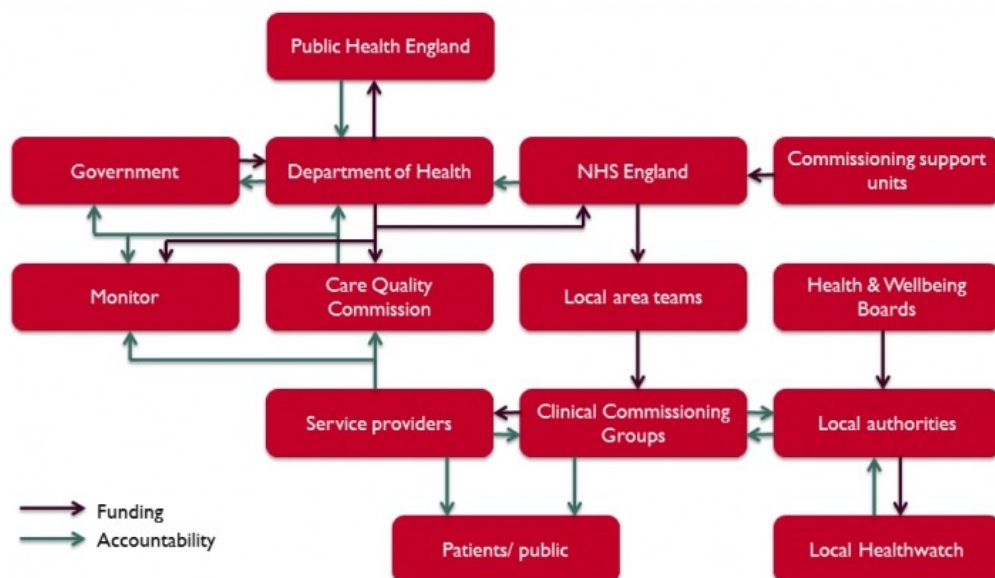
We value opinion from all our patients. We are very thankful to our PPG for attending 2-3 meetings per year in the early evening to give their thoughts on practice service and developments. However we are really keen to get members who are in their 20s-30s. If you are interested but cannot guarantee attendance, why not consider joining us by email as a virtual member? Just email us at underwood.reception@glos.nhs.uk and we'll let you know how you can get involved.

DEVELOPMENTS

In the Autumn we will be completing the last stage of our refurbishments. This will include a new automatic door and new worktops and surfaces for the nurses rooms. There will be some disruption to the surgery during this period.

Understanding the NHS

Structure of the NHS in England, as of April 2013



The diagram above is not quite correct as the Practice PMS contract is with the BATH, GLOUCESTERSHIRE, SWINDON AND WITSHIRE LOCAL AREA TEAM via the Gloucestershire Clinical Commissioning Group (CCG). This is to prevent any conflict of interest with GPs commissioning their own services.

The CCG also holds the local Contracts with the other Service Providers - Acute Hospital Trusts, Ambulance Trust and Care Services Trust (District Nurses and Health Visitors) The CCG also decides which services and drugs are not commissioned e.g. Varicose Vein surgery and certain cancer drugs.

The Care Quality Commission will inspect the practice on a regular basis. Our first inspection is awaited. The inspectors will probably want to ask patients and the patient participation group questions. Please feel free to give us feedback via the forms at reception. You can also do this on the NHS choices website <http://www.nhs.uk/Pages/HomePage.aspx> or the CQC Website <http://www.cqc.org.uk/directory/1-552884491>. Some positive comments would be welcomed!